

# NOW LEASING

\$500 OFF FIRST MONTH



425 MAIN STREET SELKIRK, MANITOBA

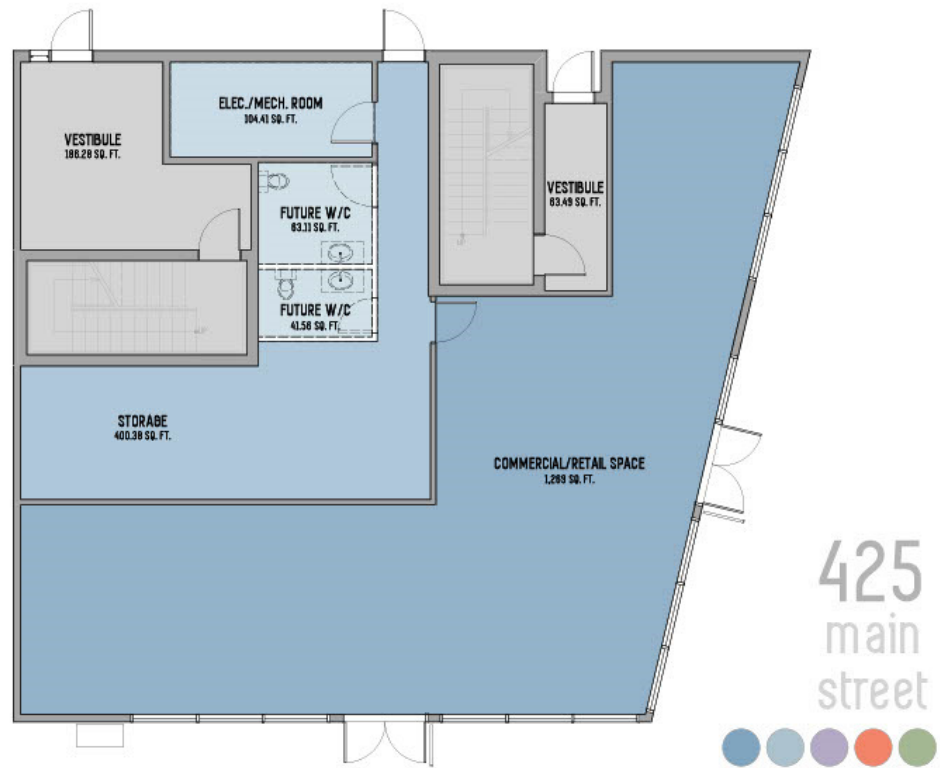
- MODERN OPEN SUITE PLANS
- STAINLESS STEEL APPLIANCES
- PRIVATE BALCONIES
- ON-SITE PARKING
- 9 FOOT CEILINGS
- IN-SUITE LAUNDRY
- QUARTZ COUNTERS
- PET FRIENDLY
- SECURITY SYSTEM
- CENTRAL LOCATION

STARTING AT \$1,190.00



[www.sfdhome.ca](http://www.sfdhome.ca) [info@sfdhome.ca](mailto:info@sfdhome.ca) [204-633-3633](tel:204-633-3633)

the  
**FLORA  
COMMONS** |  
main floor



MAIN FLOOR COMMERCIAL SPACE FOR LEASE

APPROXIMATELY 1800 SQFT FLEX SPACE

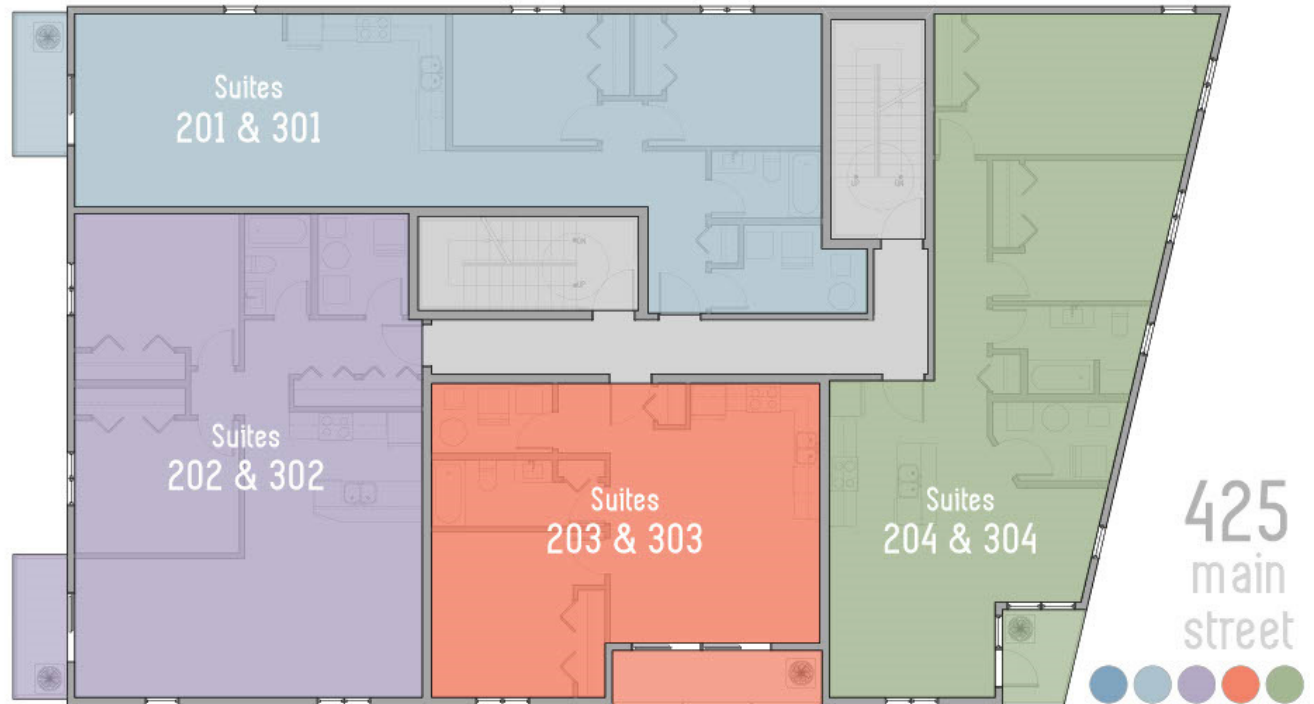
FLOOR TO CEILING WINDOWS

EXCELLENT CORNER EXPOSURE

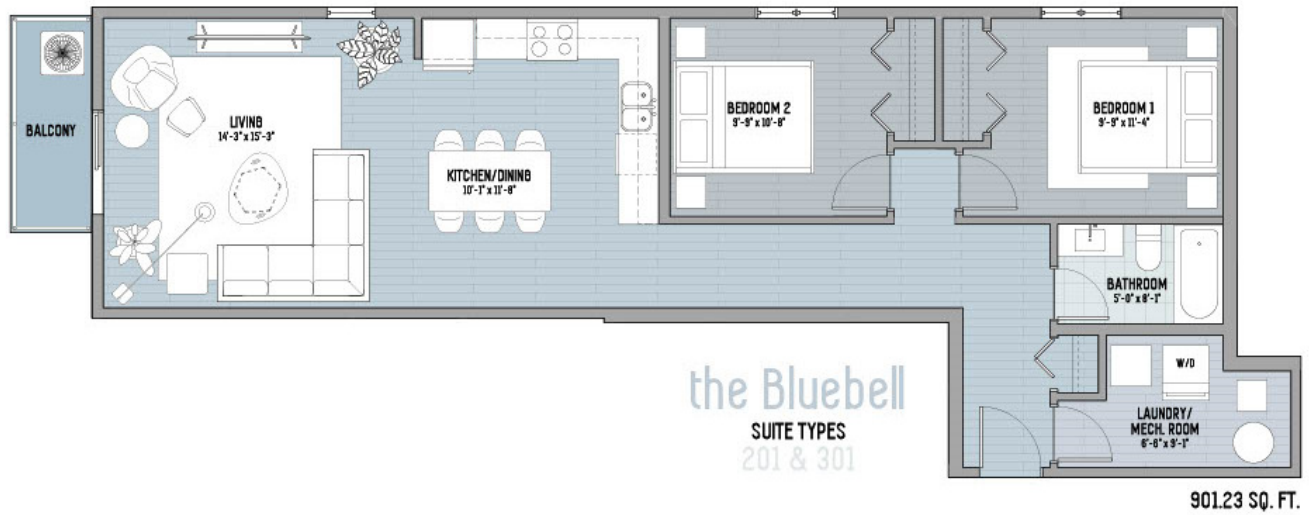
IDEALLY SUITED FOR VARIETY OF USES

● OFFICES ● MEDICAL ● DENTAL ● PERSONAL SERVICES

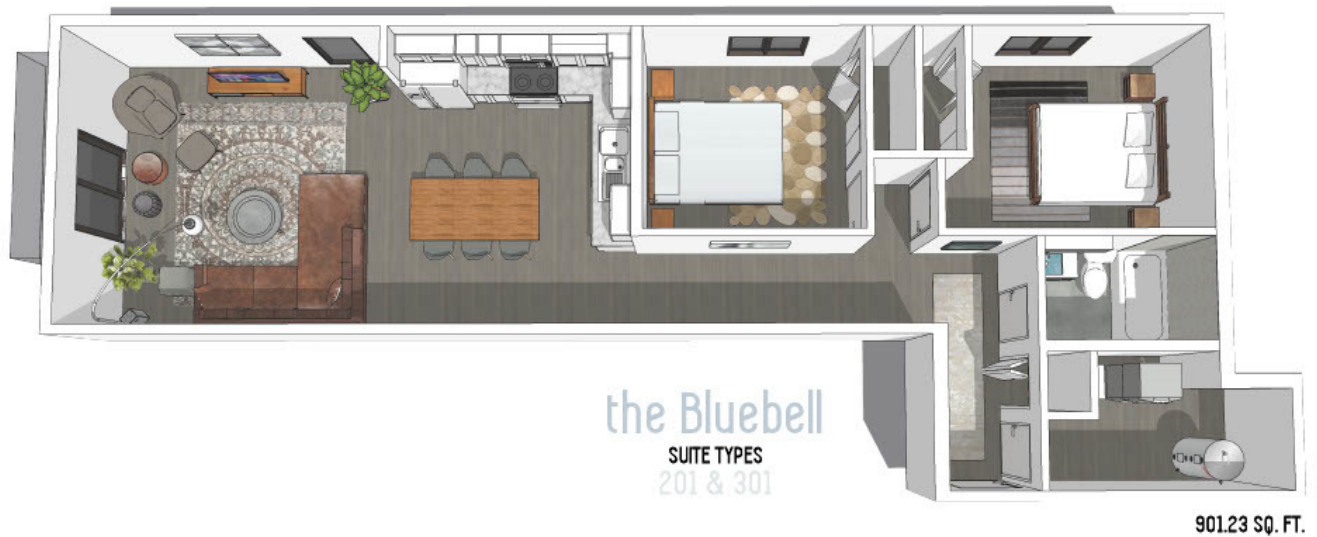
# the FLORA COMMONS | 2nd & 3rd floors



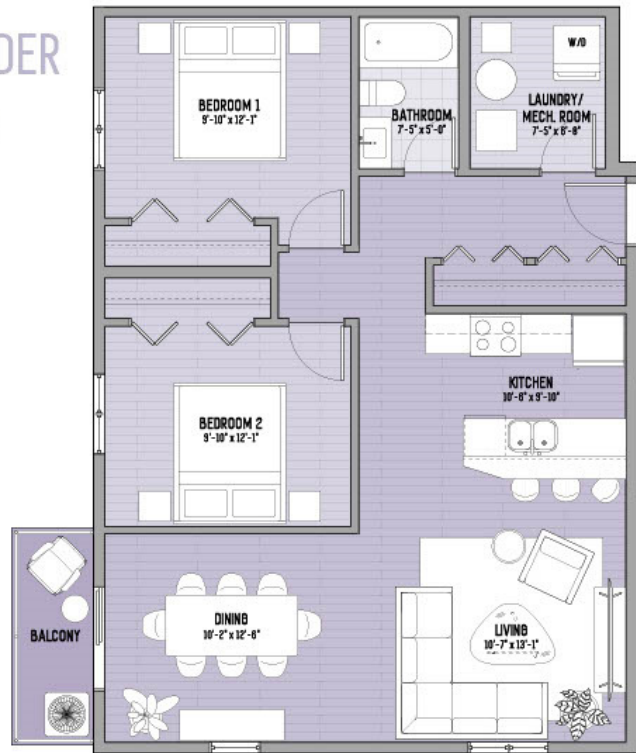
SECOND AND THIRD FLOOR PLAN



\$1,320.00 PER MONTH



the LAVENDER  
SUITE TYPES  
202 & 302



906.67 SQ. FT.



\$1,320.00 PER MONTH

the LAVENDER  
SUITE TYPES  
202 & 302



906.67 SQ. FT.







599.11 SQ. FT.

the ROSE  
SUITE TYPES  
203 & 303



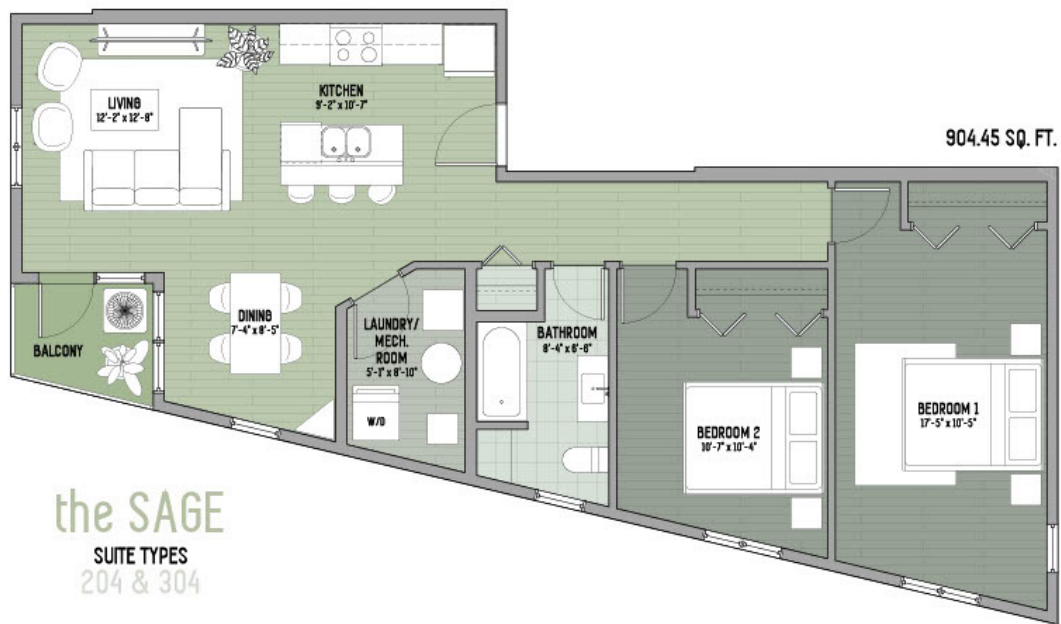
\$1,190.00 PER MONTH



599.11 SQ. FT.

the ROSE  
SUITE TYPES  
203 & 303





\$1,320.00 PER MONTH





# 425 MAIN STREET, SELKIRK, MB

- BRAND NEW CONSTRUCTION
- TRI-PANE WINDOWS
- PRIVATE BALCONIES
- ON-SITE PARKING
- INDIVIDUAL WATER TANKS
- LED LIGHTING
- LARGE KITCHENS
- QUARTZ COUNTERS
- ONE PIECE TUBS
- VINYL PLANK FLOORING
- STAINLESS STEEL APPLIANCE PACKAGE
- HIGH EFFICIENCY FURNACES
- KEYLESS ENTRY
- AIRCONDITIONING

• SIGNAGE PET FRIENDLY SIGNAGE

SIGNAGE

42

